

# AGROMETEOROLOGICAL BULLETIN

Doc No: TEA 3/3/7/2 F-004

Revision No: 1

Effective Date: 01.07.2017

Page No: 1 of 5

Approved by:



**REPORTING PERIOD:  
21 – 31 DECEMBER 2025**



**ISSUE No.: 09**

**SEASON: 2025/26**

**RELEASED:05/01/2026**

## CONTENTS

CONTENTS.....	1
HIGHLIGHTS .....	1
RAINFALL AND TEMPERATURES .....	2
RAINFALL.....	2
TEMPERATURES.....	3
MAIZE AND OTHER CROPS .....	3
CURRENT FARMING ACTIVITY .....	3
MAIZE CROP STAGE AND CONDITION .	3
OTHER CROPS.....	3
LIVESTOCK AND PASTURES .....	4
WATER SITUATION.....	4
MEDIUM-TERM OUTLOOK.....	4
RAINFALL.....	4
TEMPERATURE .....	4
SOIL MOISTURE.....	4
WIND SPEED.....	4

## HIGHLIGHTS

- **Significant rainfall observed...**
- **Fair vegetation condition...**
- **Land preparation activities...**
- **Improvement in rainfall is anticipated...**
- **Cool to warm temperatures forecasted...**
- **Improvement in soil moisture expected...**

# AGROMETEOROLOGICAL BULLETIN

Doc No: TEA 3/3/7/2 F-004  
 Revision No: 1  
 Effective Date: 01.07.2017  
 Page No: 2 of 5  
 Approved by:

## RAINFALL AND TEMPERATURES

### RAINFALL

About average rainfall was received in the 3<sup>rd</sup> dekad of December 2025 (Figure 1), mostly in the North-Western parts (Map 1).

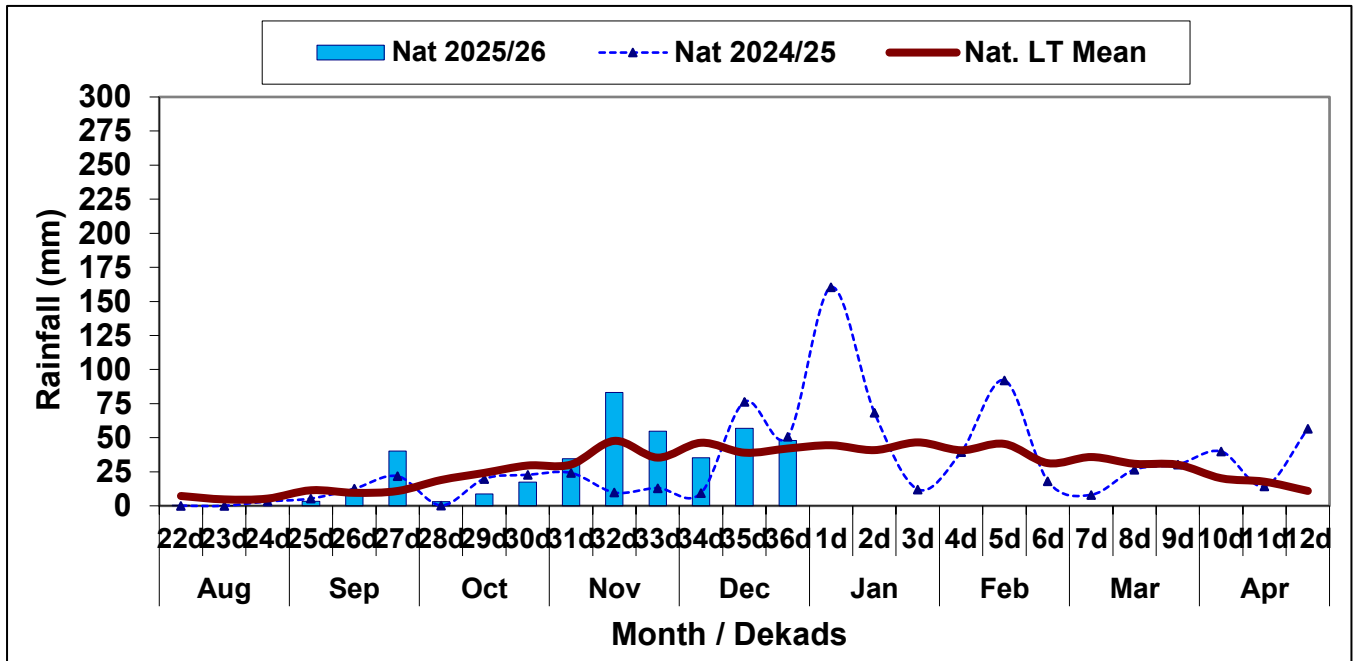
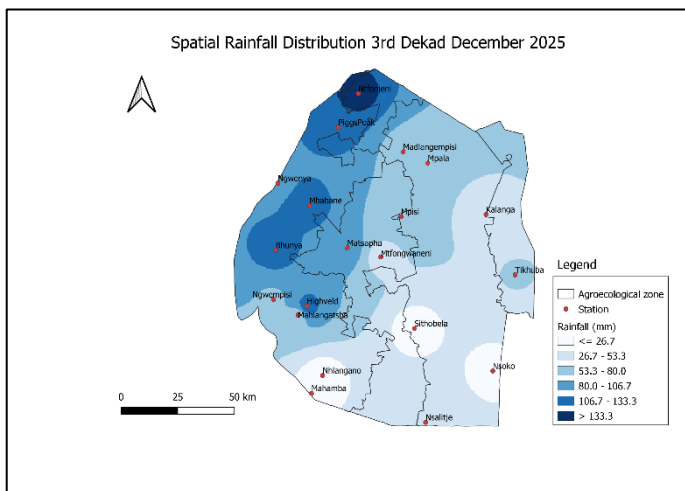
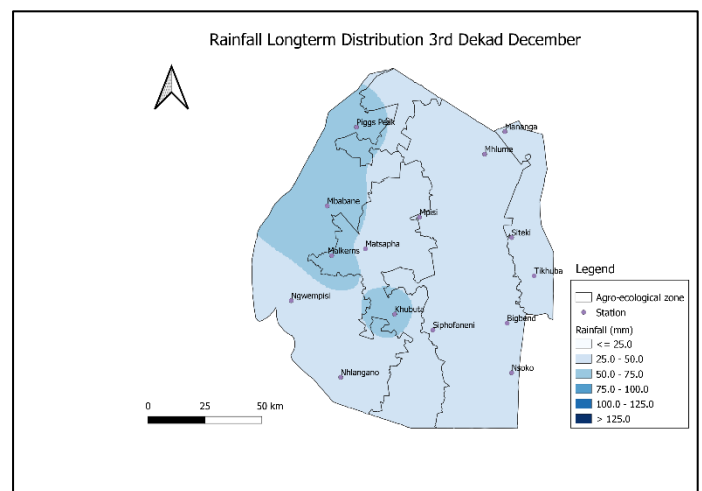


Figure 1: Rainfall distribution 3<sup>rd</sup> dekad December 2025



Map 1: Spatial rainfall distribution 3<sup>rd</sup> dekad December 2025



Map 2: Rainfall Longterm distribution 3<sup>rd</sup> dekad December

Compiled and Issued by: Agrometeorological Unit,

Swaziland Meteorological Service, Ministry of Tourism and Environmental Affairs.

Box 2652, Mbabane, Swaziland. (+268) 2404 8859 / 2404 6274. Fax: 2404 1530

E-mail: [dudu@swazimet.gov.sz](mailto:dudu@swazimet.gov.sz)

# AGROMETEOROLOGICAL BULLETIN

Doc No: TEA 3/3/7/2 F-004

Revision No: 1

Effective Date: 01.07.2017

Page No: 3 of 5

Approved by:

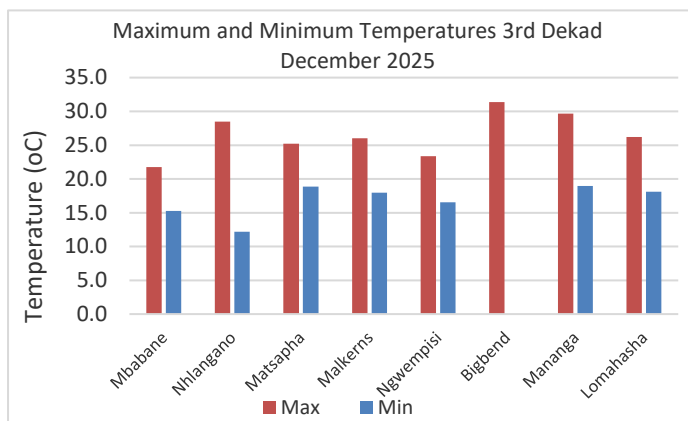
Significant rainfall was observed in all the Agro-ecological zones, with the highest observed in the Highveld in the reporting period (**Table 1**).

**Table 1: Rainfall (mm) 3<sup>rd</sup> Dekad December 2025**

	HV	MV	LV	LP	
<b>2024/25</b>	44	57	41	93	
<b>Average</b>	51	49	34	31	
<b>2025/26</b>	70	54	19	27	
<b>Anomaly</b>	<b>19</b>	<b>5</b>	<b>-15</b>	<b>-4</b>	

## TEMPERATURES

Warm to hot temperatures were observed during the reporting period (**Figure 2**).



**Figure 2: Maximum and Minimum temperatures 3<sup>rd</sup> dekad of December 2025**

## MAIZE AND OTHER CROPS

### CURRENT FARMING ACTIVITY

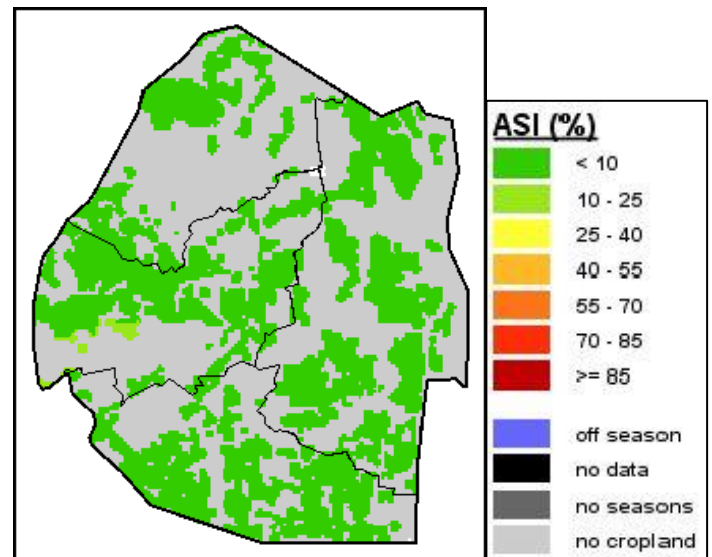
Some farmers have commenced land preparation.

### MAIZE CROP STAGE AND CONDITION

Maize has not been planted as yet.

### OTHER CROPS

No other crops have been reported to have been planted.



**Image 1: Agriculture Stress Index 3<sup>rd</sup> dekad December 2025 Source: FAO-GIEWS**

## AGROMETEOROLOGICAL BULLETIN

Doc No: TEA 3/3/7/2 F-004

Revision No: 1

Effective Date: 01.07.2017

Page No: 4 of 5

Approved by:

### LIVESTOCK AND PASTURES

Livestock is in good condition, save for those affected by the Foot and Mouth disease, and rangelands are reported to be in good condition.

### WATER SITUATION

Dam levels are reported to be at full capacities in the reporting period.

### MEDIUM-TERM OUTLOOK

#### RAINFALL

Increase in rainfall is expected in the outlook period.

#### TEMPERATURE

Cool to warm temperatures are anticipated in the outlook period.

#### SOIL MOISTURE

An improvement in soil moisture is expected in the outlook period.

#### WIND SPEED

Wind will generally be light to moderate in the outlook period

**NB: Outlook period is ten days from date of issue**

# AGROMETEOROLOGICAL BULLETIN

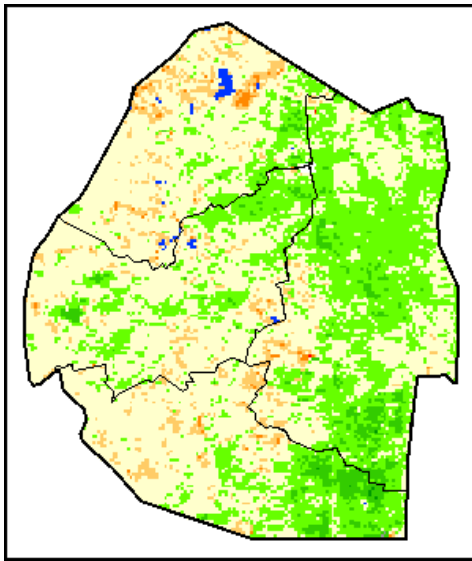
Doc No: TEA 3/3/7/2 F-004

Revision No: 1

Effective Date: 01.07.2017

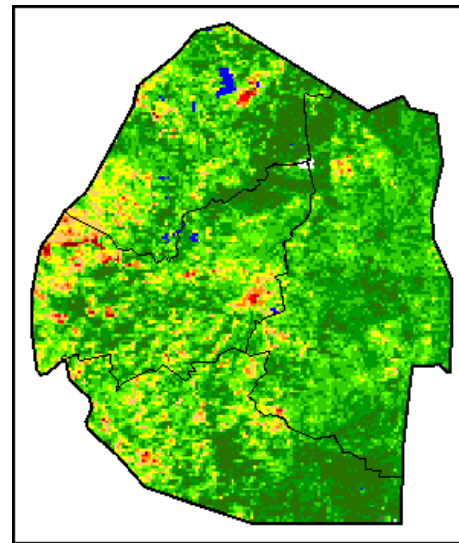
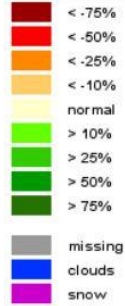
Page No: 5 of 5

Approved by:



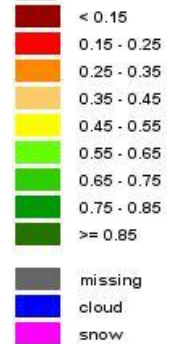
## Legend

### Difference to LTA



## Legend

### VHI



**Image 2: Normalized Difference Vegetation Index (NDVI) Anomaly (3<sup>rd</sup> Dekad December 2025)**  
Source: FAO-GIEWS

**Image 3: Vegetation Health Index (VHI) (3<sup>rd</sup> Dekad December 2025)**  
Source: FAO-GIEWS